



DIVERSIFIED FARMER

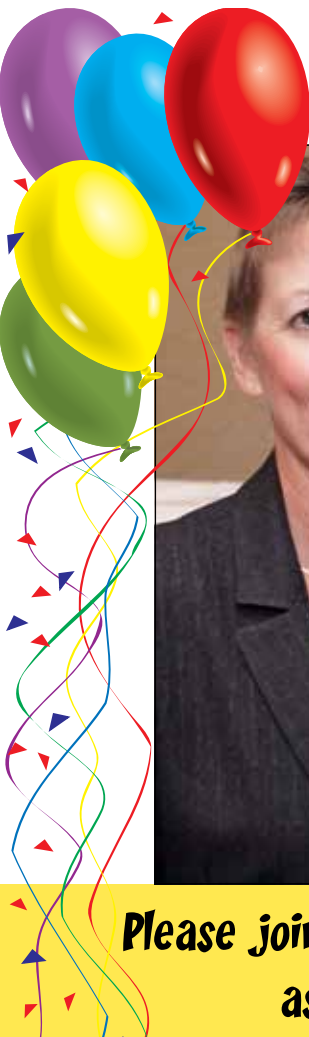
[What's INSIDE]

Prime Time
Travelers Calendar..Page 5
Meat Bundles.....Page 5
Business
to Members.....Page 6

Celebrating 100 Years 1914-2014!

OFFICIAL PUBLICATION OF THE LAKE COUNTY FARM BUREAU

VOLUME NO. 95, NO. 4 GRAYSLAKE, ILLINOIS WWW.LCFB.COM AUG./SEPT. 2016



Happy 40th Anniversary, Donna Freitag!



In 1976, Donna Freitag was mailing letters for .13 cents, filling up her car for .59 cents a gallon, singing "Love Will Keep Us Together", celebrating the US Bicentennial, deciding whether she was voting for Jimmy Carter or Gerald Ford and finishing her senior year at Grayslake High School.

As any good high school student would do, Donna was also looking for a part-time job. Assisting in her search was Grayslake High School Business Manager David Bonner. Bonner put her in touch with Jerry VanderMeer, who was the Country Companies Agency Manager.

VanderMeer hired Donna as a part-time afternoon receptionist answering phones for Country Companies, agents, claims and the Lake County Farm Bureau. Donna would continue working within the organization for Country Companies Claims until being "officially" hired by former Lake County Farm Bureau Manager Dick Raftis as the orga-

nizations Membership Secretary in 1979. In the early 1980's, she was promoted to Farm Bureau Bookkeeper.

"After 40 years, you see a lot of changes," says Donna. "When I started, we had 13 agents in Lake County and about 7,000 Farm Bureau members. Today, we have over 40 agents and over 12,000 members," adds Donna. With that type of growth, change was inevitable. Donna recalls the early years when the Farm Bureau and Country Companies were like a small family.

"It was like having an extended family back then. We all occupied the same building on Rt 45," says Donna. "I miss those days," she recalls.

While Farm Bureau and COUNTRY Financial have grown, Donna has helped assist with that growth in here current position as Executive Assistant. Hand typed membership cards have been replaced by electronic databases and handwritten ledgers have been replaced by sophisticated

accounting software.

"I have been fortunate enough to work with Donna for nearly 19 years," says Gregory Koeppen, Farm Bureau Executive Director. "You would be hard pressed to find someone as ethical, diligent and meticulous as Donna. She goes above and beyond the call of duty each day," adds Koeppen.

Outside of Farm Bureau, Donna is an avid gardener, enjoys reading, is finding time to travel and spends time with her family.

The voice of that 1976 Grayslake High School kid can still be heard each day as she greets callers with, "Good Morning Farm Bureau" just as she has for the past 40 years.

"On behalf of the Lake County Farm Bureau Board of Directors and Staff I would personally like to thank Donna for her 40 years and I look forward to having her here around for another 40," says Koeppen.

Please join us at the Farm Bureau Office for an Open House on Tuesday, August 23 from 11am-4pm as we recognize Donna for her 40 years of service with Lake County Farm Bureau!

LAKE COUNTY FARM BUREAU'S

102nd Annual Meeting



1914 - 2016

Tuesday, September 20, 2016

6 pm Reception ~ 7 pm Dinner ~ 8 pm Meeting

Illinois Governor Bruce Rauner invited as keynote speaker, but not confirmed.

AT: **MARRIOTT LINCOLNSHIRE RESORT,**
10 MARRIOTT DR, LINCOLNSHIRE, IL

**RECEPTION, DINNER,
REMINISCING & DOOR PRIZES**

ADVANCED TICKET SALES ONLY. TICKETS

AVAILABLE FOR PICK UP THAT EVENING AT THE DOOR.
RSVP NO LATER THAN THURSDAY, SEPTEMBER 8, 2016

_____ tickets @ \$15.00 each (LIMIT 2)

NAME(S) _____

PHONE () _____

EMAIL _____ FARM BUREAU NUMBER _____

MUST BE A SEPARATE CHECK FROM DUES PAYMENT. SEND & MAKE CHECK PAYABLE TO: LAKE COUNTY FARM BUREAU, 70 US HWY 45, GRAYSLAKE, IL 60030



Get on track with your SUMMER FUN!



Six Flags GREAT AMERICA
It's playtime!™
Gurnee, IL

2015 Six Flags Great America Discount

	Ticket Price	Savings of
1-Day General (3 yrs & up)	\$44.50	\$25.56

*Tickets do not include Hurricane Harbor Water Park.
Tickets are valid for Fright Fest.
Age 2 and under are free.*



**Illinois Farm Bureau is...
Great Deals for Members**

Contact the Lake County Farm Bureau at 847-223-6506, or stop by our office at 70 US Hwy 45 in Grayslake for tickets



2016 Golf Outing a Success

The 2016 Lake County Farm Bureau Annual Golf Outing was a great success. A total of 73 golfers participated in this fundraising event held at Fox Lake Golf Club on June 23, which raised \$3,709 to benefit the American Lung Association.

The Lake County Farm Bureau would like to send a big thank you to all the participants of this year's event along with all the businesses that sponsored or made a donation to help support this great cause. Here is a list of our sponsors and donors:

CART SPONSORS

- Sarpino's Pizzeria
- T.O.P.S Dog Training

HOLE SPONSORS

- Grayslake Family Dental
- Ace Hardware
- Citizens for Mike Nerheim
- David B Stolman-Lake County Treasurer
- Shooter's Sports Bar & Billiards
- Krueger Vegetables
- McNeill Grain
- Charlie's Garden Club
- Didier Farms
- Buffalo Wild Wings
- First Midwest Bank
- 1st Farm Credit Services
- BBQ'd Productions

- Krueger's Vegetables
- Kane County Cougars
- Chicago Wolves
- Chicago Bulls
- Chicago Bears
- Chicago Cubs
- Chicago White Sox
- Kevin Glogovsky
- Tony's Butcher Shop
- Beelow's Steakhouse
- Premier Chiropractic
- Yarc Farms



DIVERSIFIED FARMER

Published Bi-Monthly by
LAKE COUNTY FARM BUREAU INC.

Phone: (847) 223-6506
www.lcfb.com

USPS NO. 158-580
Periodical Postage Paid at Grayslake, IL 60030-9998 and at additional offices.

DONATIONS

- Bake's Pub & Grill
- Bill's Pub North
- Crossroads
- Car Spa
- Lewis Florist
- Dover Straits
- The Point Pancake House
- Corner Bakery
- Kaiser's Pizza
- Donna Freitag
- Charlie's Garden Club
- Polished Salon & Spa
- Nails Under the Sun

President Jerry Henningfeld
Vice President Duane Beelow
Secretary Rod Buss
Treasurer Tom Doolittle

DIRECTORS:
Dave Krueger, Pat Oaks,
Don Tekampe,
Eric Nielsen, Pete Tekampe,
Bill McNeill, Yarc,
Bernie Weidner

Manager Gregory Koeppen
Executive Assistant Donna Freitag
Information Director Andrew Blaul
Membership Assistant Sue Squillaci

Postmaster-Mail form 3579 to:
70 US Highway 45, Ste. 120
Grayslake, IL 60030-2200
Subscription Price: \$2.00



16678 W. Aptakisic Rd., Prairie View/Lincolnshire, IL
www.DidierFarms.com | 847-634-3291





Buy the very best locally grown vegetables and produce!
Farmstand Open Daily 9am-6pm

Lake County COUNTRY Financial

Ed Macek(847) 395-4100 <i>906 Hillside, Antioch Fax (847) 838-2797</i>	Dave Steffenhagen(847) 356-0080 Brett Ostertag(847) 250-7893 <i>31 Cedar Ave., Lake Villa Fax (847) 356-0246 Fax (847) 496-3010</i>
Glenn Jackson(847) 838-4100 Mark Steggerda(847) 395-7054 <i>1478 N. Route 83, Antioch Fax (847) 838-2905</i>	Mark Mirczuk(847) 438-3983 Bob Geraghty(847) 438-3382 <i>444 S. Rand Rd., Suite 304, Lake Zurich Fax (847) 438-4351</i>
Tom Charniak(847) 973-9900 <i>37 E. Grand Ave., Suite 102, Fox Lake Fax (847) 973-0300</i>	Wayne Criswell(847) 362-7900 Tim Dydo(847) 362-7900 <i>1880 W. Winchester Rd., Suite 108, Libertyville Fax (847) 362-4606</i>
Joe Weiler(847) 223-9900 Fax (847) 223-9832	Sara Velander(847) 548-2120 Dave Keller(847) 847-4205 <i>1512 Artaius Pkwy., Suite 202, Libertyville Fax (847) 548-2140</i>
Chris Seiler(847) 548-0346 Bill Gitzke(847) 548-5572 Brant Spreitzer(847) 543-9700 Fax (847) 548-5584	Craig Hunter(847) 265-0799 Scott English(847) 265-0799 <i>305 S. Granada Blvd., Suite 2, Lindenhurst Fax (847) 265-0847</i>
Tina Carlson(847) 543-9600 Frank Kalinoski(847) 543-6700 Mark Price(847) 543-9100 Fax (847) 543-4500 <i>70 US Highway 45, Grayslake</i>	Burt Hurley(847) 362-9560 Paul Moskvitin(847) 367-5474 Sanjay Kantharia(847) 566-9296 <i>1230 Allanson Road, Mundelein Fax (847) 362-1439</i>
Nick Johnson(847) 231-1151 Matt Bruner(847) 231-1152 Paul Wszolek(847) 231-1153 James Sauser(847) 231-1154 Dan Fishbaine(847) 231-1184 Ray Simnick(847) 231-1186 Paul Benson(847) 231-1158 <i>1190 E. Washington St., Grayslake Fax (847) 548-3401</i>	Jason Coroneos(847) 865-5425 John Murphy(847) 865-5425 <i>218 S. Main St., Unit 1, Wauconda Fax (847) 865-5430</i>
Steve Goglin(847) 244-8100 <i>3575 Grand Ave., Ste. G, Gurnee Fax (847) 244-0900</i>	Dave Keller(815) 455-7082 <i>820 E. Terra Cotta Ste. 236, Crystal Lake Fax (815) 455-7083</i>



Brookfield Zoo holds "Summer Nights"

Need somewhere fun to take the entire family this summer, but just for the evening? If so, we have your answer! Come on out to the Brookfield Zoo for "Summer Nights" on Friday and Saturday nights from 4-9 pm through August 13th.

On June 17th the Lake County Farm Bureau was at the Brookfield Zoo to greet and meet visitors. Local farmers were also present to answer any questions visitors may have about how their food is grown. While at the zoo, take advantage of the great entertainment opportunities including a live entertainment stage, a kid's stage, food, beer, wine gardens, and a laser show at the end of the evening. Stage entertainment for kids begins at 6 pm on the East Mall Kid's Stage with music, magic juggling, acrobatics, and

creative storytelling. For adults, live bands start at 7 pm on the East Mall Stage. Besides stages for entertainment, there are themed roaming performers, including Mardi Gras, renaissance, and pirates. Additionally the Zoo is 216 acres of beautiful land to roam and explore while seeing the animals.

During "Summer Nights" the following attractions are discounted: Butterfiles!, Dolphins in Action, The Carousel, Hamill Family Play Zoo, Hamill Family: Wild Encounter, Motor Safari, and Stingray Bay.

To attend this great event the cost is \$15.95 for adults and \$10.95 for children ages 3-11 for nonmembers, for zoo members it is free.

For more information about this venue, please visit www.ilfb.org/summerfun.



Vice President Duane Beelow, Brea Beelow, and President Jerry Henningfeld take a break from speaking to zoo-goers for a photo.



Karen Beelow and Vice President Duane Beelow man the "Meet an Illinois Farmer booth at the Brookfield Zoo's Summer Nights event.

Teachers! LCFB to host 'Get a Grant Workshop'

— WEDNESDAY, SEPT. 7 FROM 4:30 - 6:30 —

Start the upcoming school year off with a grant...or two! The Lake County Farm Bureau office will be hosting a Get a Grant Workshop for teachers on the evening of Wednesday, September 7th from 4:30-6:30 at the Farm Bureau office in Grayslake at 70 US Hwy 45.

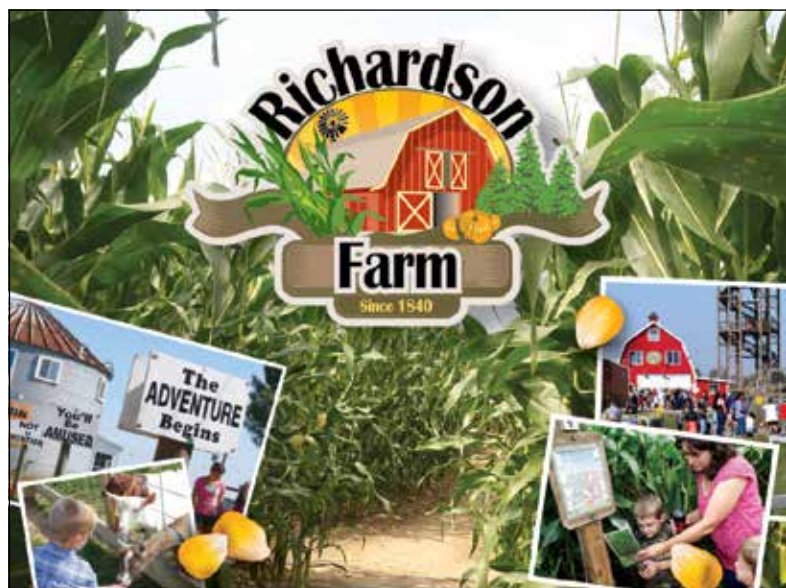
Teachers who attend will learn all about the various grants that

are available not only through the Lake County Farm Bureau's Agriculture in the Classroom (AITC) program, but also about the grants that are available through the Illinois AITC program located in Bloomington. The two hours will also include ten separate common core lessons that teachers can utilize in their classroom. Attending the course also provides two

PDCHs through the Lake County Regional Office of Education.

This class is available free of charge to all teachers who would be interested in attending. Pre-registration is required. If you would like to sign up please contact Information Director Andy Blaul at 847-223-6506 or via email at ablaul@ameritech.net. For more info see lcfb.com.

BUCKET LIST OPPORTUNITY!
Love watching the Budweiser Clydesdale hitch?
 Want to have slice of history? Hitch was shown at National Western Stock Show in Denver this past January - Full Belgian Draft Horse Hitch for sale - 7 Belgian geldings with great disposition; horse semi trailer and harnesses for show additional. Horses in great condition - owners need to commit more time to their own businesses and these horses need to be in a private or corporate hitch! Put your heritage to work and own this hitch! Call DeAnne Bloomberg at 309-781-4073 to learn more.



Where some people just see corn, we bring family adventure!

ADVENTURE FARM: SEPTEMBER & OCTOBER

- World's largest Corn Maze
- Picnic Area & Concessions
- Observation Tower & Zip Line
- Rides & Slides & Pedal Carts

Come on down for a fun filled day on our farm.

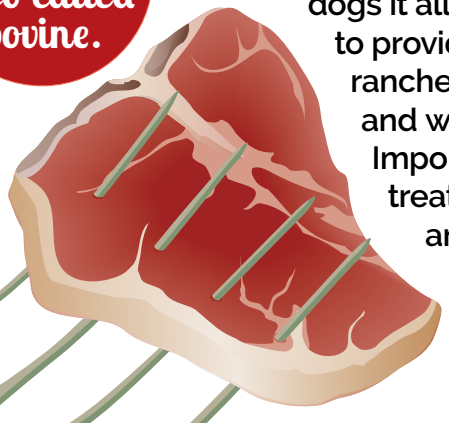
www.RichardsonFarm.com

AG in the CLASSROOM



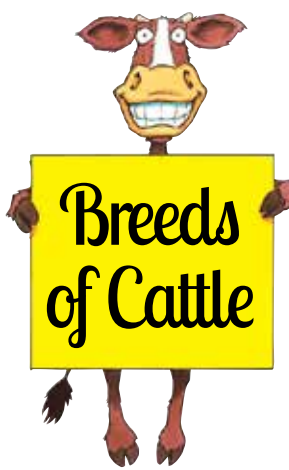
Beef cattle are also called bovine.

Beef Brief: Each year the average American eats 61 pounds of beef! Whether that is through brisket, steak, hamburgers or even hot dogs it all comes from beef cattle. Farmers and ranchers work hard to provide a safe beef supply for consumption. Together, farmers, ranchers, feedlot employees and veterinarians monitor the health and well being of the animals. This is done to prevent herd illness. Important tools and vaccines are often used to prevent, control and treat disease. By focusing on good animal care, proper nutrition and disease prevention, livestock farmers and their veterinarian reduce antibiotic use – and save money in the process.



Beef Facts:

- Gestation or pregnancy is 285 days or 9 months.
- Cattle are Ruminants, or creatures that have multiple compartments in their stomach. There are four compartments in the cattle's stomach: 1 Rumen, 2 Reticulum, 3 Omasum, 4 Abomasum. Ruminants first chew their food, to soften it, swallow it, and then return it to their mouth for continued chewing. This is called chewing the cud.
- Cattle eat silage, which is fermented corn, wheat or hay with the stalks or leaves that is chopped.
- The top five counties in Illinois for beef cattle include: JoDavies, Adams, Fulton, Knox, and Ogle.
- The United States supplies 25% of the world's beef supply with 10% of the world's cattle.
- Market rate for cattle is 1,200-1,400 pounds at 16-20 months of age.
- Beef cattle also produce many other byproducts.
- Candles, crayons, cosmetics, detergent, pet foods, piano keys, insulin for diabetes.
- From one cow, 11 basketballs, or 144 baseballs can be made. It takes 3,000 cow hides to supply the NFL for one year.
- Overall beef is a good source of ZIP (zinc, iron, and protein) as well as many other vitamins and minerals that you need to be strong and healthy. These vitamins also help carry oxygen to your brain. B-vitamins release the energy in food and work to promote growth and maintain health.



Today farmers use the popular beef breed Angus, but also combine a variety of other breeds to produce high quality beef. Other breeds include: Hereford, Shorthorn, Charolais, Simmental, Limousin, Maine-Anjou, Brangus, Chianina, Red Angus, and Brahman. All these cattle come in different colors and sizes, including red, black, white, roan, gold, brown and gray. Beef farmers raise cattle

with quality traits such as early calving, good mothering instincts, early maturity heavy muscling and high quality meat. Improvement in cattle farming technology have helped provide consumers with the lean beef they demand while using fewer resources. This allows farmers to provide safe, high-quality beef at an affordable price.

Beef Identification

Farmers use a number of ways to identify their animals: brands, tattoos, ear notches and ear tags. Animal identification allows farmers to keep records on an animal's birth date, mother, father, growth, weight gain, health history, offspring, and even how much feed they are eating.

Beef Word Search

M	E	E	P	X	E	M	X	X	A	Q	F	S	E	L
T	U	T	U	D	L	R	O	M	E	E	Q	W	N	R
A	G	S	I	T	E	L	T	M	P	F	Z	F	I	K
R	E	H	A	F	X	M	U	R	A	A	S	A	V	I
J	J	E	I	M	U	R	E	B	P	S	C	J	O	Y
W	N	E	W	N	O	T	G	D	X	A	U	L	B	A
C	H	A	U	R	I	B	D	J	M	T	G	M	H	E
M	X	A	U	C	G	U	A	U	F	H	E	K	F	H
M	I	M	U	T	B	E	T	C	M	H	J	S	L	N
F	E	L	T	N	A	N	I	M	U	R	Z	T	A	W
N	U	R	D	J	J	I	V	Q	Z	D	N	E	C	G
M	O	X	A	C	O	W	S	I	L	A	G	E	F	O
F	E	E	B	J	L	W	B	V	S	O	U	R	K	Q
W	U	S	V	A	H	R	X	J	Z	T	S	H	N	K
C	G	K	V	W	C	W	X	S	Q	D	I	T	P	C

BEEF SEARCH WORDS ABOMASUM, BEEF, BOVINE, BULL, CALF, COW, CUD, HEIFER, HIDE, OMASUM, RETICULUM, RUMEN, RUMINANT, SILAGE, STEER

Bovine Classification List

BULL:
Male cattle used for breeding

STEER:
Male cattle not used for breeding

COW:
A female that has given birth to a calf

HEIFER:
A female that has not had a calf

CONTEST RULES: CHILDREN AGES 12 AND UNDER! Complete and return the Beef Brief Word Search, and you could win Two Movie Tickets! Find all 15 of the hidden words, and return the contest entry form by Friday, Sept. 16 and you will be entered in that issue's drawing.

MAIL TO: Lake County Farm Bureau, AITC, 70 US Highway 45, Grayslake, IL 60030



Contest Entry Form

NAME: _____

ADDRESS: _____

PHONE: _____ AGE: _____





Romantic Rhine & Mosel River Cruise

The Lake County Farm Bureau, along with seven other county farm bureaus from the area are offering a trip to experience the Rhine and Mosel Rivers on a romantic cruise. This eleven day trip will begin in Amsterdam, and will feature many tour stops with an end destination in Switzerland. Here are some of the things that are included:

- 23 meals (8 dinners, 6 lunches, and 9 breakfasts)
- International Cruise Director, and local English-speaking guides for shore excursions
- Once onboard, unpack only once into a tastefully furnished river view stateroom with a window for panoramic viewing
- Narrated canal cruise in Amsterdam
- Shore excursions in Cologne, Cochem, Strasbourg, and Lucerne
- Narrated cruising through UNESCO World Heritage Region of the Rhine River Valley including the legendary Lorelei Rock
- Explore beautiful Reichsburg Castle
- All meals included on board with a variety of international cuisines
- All onboard lunches and dinners are four courses and served with complimentary regional wines, beer, and soft drinks
- Afternoon tea and late evening snack served daily in lounge
- Comfortably furnished lounge and bar area with sofas featuring floor to ceiling windows
- Complimentary WiFi onboard
- Evening events and local insights onboard
- Enhanced touring experience with audio headsets

With eleven days of cruising/touring, there is a ton of things to do/experience. For more information visit lcfb.com. Prices for the trip vary depending on which deck of the cruise vessel you select. For reservations contact Tony at Lidstrom Travel at 815-398-8888, or via email at tony@lidstromtravel.com. For any questions please contact Executive Assistant Donna Freitag at 847-223-6506 or via email at dfreitag@ameritech.net.

There will be an informational meeting on Thursday, August 18th at the Lake County Farm Bureau office at 7:00pm.

Farm Bureau Nominations Due Aug. 12

Director Rodney Buss, 2016 Nominating Committee Chairman, announces anyone seeking to have his or her name placed in nomination for a Lake County Farm Bureau Director position, must do so on or before 3 p.m. Friday, August 12, 2016.

Qualified candidates must be actively engaged in farming, and must also be a Lake County Farm Bureau member in good standing. Nominations must be submitted in writing to: Lake County Farm Bureau, Director Rodney Buss, Nominating Chair, 70 US Highway 45, Grayslake, IL 60030. No faxed nominations will be accepted. Name will be certified by the nominating committee to confirm eligibility.

No nominations for director will be accepted at the annual meeting which is set for Tuesday, September 20, 2016 at the Marriott Lincolnshire Resort. Directors will be elected to three-year terms.

Prime Time Travelers Calendar FOR THOSE 55 AND OVER

Thursday, August 11: Luncheon at the University of Illinois auditorium from noon to 2 p.m. For lunch we will enjoy sliced roast sirloin of beef au jus, mashed potatoes with brown gravy, buttered sweet corn, Greek salad, dinner rolls and brownies. For fun we will be playing BINGO with cash prizes. Call 847-223-6506 no later than Friday, **August 5, 2016** for reservations.

Thursday, September 15: Luncheon at the University of Illinois auditorium from noon to 2 p.m. For lunch we will enjoy baked lasagna with meat sauce, green beans almondine, garden salad, dinner rolls and pudding squares. The Lake County Forest Preserve will present, "The Man from Libertyville". The political history of Adlai Stevenson who served as Governor of Illinois and an Ambassador of the United Nations. **Please note the date change. Call 847-223-6506 no later than Friday, **September 9, 2016** for reservations.

Thursday, October 20: Luncheon at the University of Illinois auditorium from noon to 2 p.m. For lunch we will enjoy breast of chicken with wine and mushroom sauce, oven roasted potatoes, Francais blend veggies, garden salad, dinner rolls and Tollhouse bars. "A Safe Place". Lake County Domestic Violence Program. Members are asked to bring donated paper goods for Safe Place.

**For your fine taste in farm fresh meat!
Top-quality farm-fresh beef and pork.**

MEAT BUNDLES

PRICES INCLUDE SALES TAX

QUEEN BEEF BUNDLE - \$245

- One Top Round Roast (3+ lbs)
- One Boneless Chuck Roast
- Two Top Butt Steaks
- Four T-Bone Steaks
- Two Top Round Steaks (1" thick)
- One Chuck Roast
- Ten - 1 lb pkgs Ground Chuck (95-97% lean)
- Two - 3 lb pkg Patties

GOURMET GRILL PAK - \$280

- Six - 10 oz Ribeye Steaks
- Eight - 10 oz New York Strip Steaks
- Six - 16 oz T-Bone Steaks
- Two Slabs Pork Loin Back Ribs
- Two - 2 lb pkgs Patties

MID SIZE BEEF BUNDLE - \$240

- Ten - 1 lb pkgs Ground Chuck
- Two Rib Steaks
- Four T-Bone Steaks
- Two Top Butt Steaks
- Two Top Round Steak (1" thick)
- One Chuck Roast
- One Boneless Chuck Roast
- One Sirloin Tip Roast
- Two Tri Tip Roast

Meat bundles exclusively for Lake County Farm Bureau members from Tony's Butcher Shop, Grayslake.

FREEZER PLEEZER - \$170

- 5 lb Chicken Cutlet
- Five - 1 lb pkgs Ground Chuck
- Three lb bacon
- Two - 3-4 lb Sirloin Roast
- Four - 10-12 oz Ribeye Steaks
- Four - 10-12 oz Strip Steaks

MINI FREEZER BUNDLE - \$95

- Four ½" Pork Chops
- Four Cubed Steaks
- Three - New York 10-12 oz
- One - 1 lb pkg Pork Sausage Links
- One Boneless Pork Loin Roast
- One Sirloin Tip Roast
- Two - 1 lb pkgs Ground Chuck

COUNTRY STYLE GRD CHUCK - \$43

- 12 - 1 lb pkgs Lean Ground Chuck

GROUND CHUCK PATTIES - \$30

- 6 lb box 1/3 lb patties (18 patties)

BONELESS PORK CHOP BOX - \$37

- Ten - 1" Chops
- Pork Roast

SAUSAGE - \$55

- Two - 1 lb pkgs Bulk Pork Sausage
- Two - 1 lb pkgs Pork Sausage Links
- One pkg of 6 Italian Sausage
- One pkg of 6 Pork Dogs
- One pkg of 6 Bratwurst
- One Pkg of 6 Hot Italian
- One pkg of 6 Calabrese

CALL 223-6506 TO ORDER

ORDER DEADLINE: MONDAY, SEPT. 19 - PICKUP: TUESDAY, OCT. 4

BUSINESS TO MEMBER PARTNERS

ANTIOCH

Raymond Chevrolet
847-395-3600
\$10 off any service \$30 or more

DEERFIELD

The Mulch Center
847-459-7200
10% off of all manufactured products

FOX LAKE

Fox Lake Toyota
847-587-9200
10% Discount on any service up to \$100 maximum

GRAYSLAKE

Alwin Anthony Salon & Express Spa
847-223-1100
\$15 off for new guests. \$10 off any nail or airbrush tan service for existing guests

Bake's Restaurant
847-223-3430
30% off food Mondays & Sundays

Better Homes & Gardens Real Estate Star Homes
847-548-2625
Free seller home warranty during the period home is listed for sale with our office - \$675 value

Comfort Suites Grayslake
847-223-5050
20% discount rate with advance reservation required

Equity Minder, LLC
847-515-5031
Financial software program to enjoy

debt-free lifestyle \$647 (suggested retail value is \$1,297)

Lewis Florist
847-223-6600
10% off flowers or gifts. *Not on delivery

Medleys In Motion
847-231-4577
\$100 discount on a wedding package of \$995

R.E. Allen & Associates, Ltd.
land surveying
847-223-0914
10% discount

Rock Chevrolet
847-223-2234
10% off service work or parts purchase

Rudolph's Furniture
847-223-5497
10% off sale prices *Clearance items 5% off

Salon Luxe
847-223-6665
25% off Chemical Services, colors, highlights, perms - first time only clients **Must mention ad

The UPS Store
847-231-5680
Color copies @ .19 8.5 x 11 single sided • Black/White @.04 8.5 x 11 single sided

GURNEE

Jamie Angela Salon
(Formally Salon Le Beau)
847-625-9722
½ off Cut and Style or \$25.00 off color *First time clients only.

LAKE BLUFF

The Mulch Center
847-578-0100
10% off of all manufactured products

LAKE VILLA

All-Star Heating & Cooling
847-641-1200
\$200 off new a/c for furnace system or \$20 off a service call

V. Olsen Heating & Air Conditioning, Inc.
847-356-3581
\$25 off any scheduled service call

LIBERTYVILLE

C & A Robot Factory
847-996-0123
20% off day play, 15% off all other services excluding retail merchandise

Fastsigns of Libertyville
847-680-7446
10% off any in-house product or service

Fine's
847-367-1978
Fast Casual Restaurant
Free fries or side salad with purchase

Hansa Coffee Roasters
847-226-8815
10% off any purchase

LINDENHURST

Ad-Lib Geo Café
847-245-7328
10% discount on food only

PALATINE

Keller-Williams
847-341-4376
Ron Rank - 20% off the listing commission

ROUND LAKE BEACH

Buffalo Wild Wings
847-546-8366
\$5.00 off purchase of \$25.00 (alcohol not included)

The Lean Solution
224-430-1918
50% off 1st three months coaching fee. 1st consultation is free.

THIRD LAKE

Sarpino's Pizzeria
847-223-5000
10% discount for members

VOLO

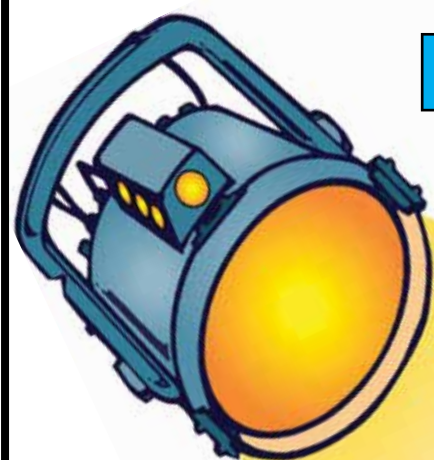
The Mulch Center
847-459-7200
10% off of all manufactured products

WAUKEGAN

Pope's Florist, Ltd.
847-263-7673
\$5.00 off any in store purchase of \$25 or more, excluding wire transfers

WILDWOOD

Warren Electric
847-223-8691
Lighting fixtures in stock only additional 10% discount



Local Discount Provider Spotlight!

Every issue of the Diversified Farmer will now feature a business partner from our Business to Member discount program. Be sure to visit our website www.lcfb.com for info on all of the savings/discounts available through the B2M program!

**THIS ISSUE'S
LOCAL BENEFIT
PROVIDER IS...**

Pope's Florist



Discount provided to LCFB members with valid Illinois Farm Bureau membership card:

\$5 OFF ANY IN-STORE PURCHASE OF \$25 OR MORE

EXCLUDES WIRE TRANSFERS

2016 Educator Field Trip in the Books!

Fifteen Lake County area teachers participated in the Lake County Farm Bureau's Annual Summer Agricultural Institute (SAI) Field Trip. The Agriculture in the Classroom program continues to promote the teaching of agriculture in Lake County classrooms even in the summer months. This Lake County Farm Bureau sponsored event is designed to aid area teachers in incorporating agriculture into their teaching curriculum by providing them with first-hand experience along with lesson plan ideas to bring back to their classrooms.

This year's field trip took place between July 11th and July 14th, and featured twelve stops, all of which had their own unique ties to agriculture. In addition to the field trip stops, participating teachers were also shown ways to incorporate agriculture into their curricula when they return to their classrooms this Fall.

Below is a list and information about each of the locations the participating teachers visited:

L.L. Studer Beekeepers, Wadsworth – To start the field trip, teachers had the opportunity to learn about honey bees. A major part of the learning experience at L.L. Studer's included seeing the different parts of the bee hive and even a queen bee. Discussions with the bee keepers gave the teachers a deeper understanding about how the honey bee survives and the vital role it plays in producing our food here in Lake County, Illinois. Teachers went home with a jar of honey as a souvenir.

Richardson's Tree Farm, Spring Grove – The second stop on the trip took the group to Richardson's Tree Farm. Richardson's Tree Farm has learned to grow and expand since its establishment in 1840. Teachers had the opportunity to learn about the history of this 6th generation farm along with taking a tour of their Christmas tree operation. After the Christmas tree tour, teachers were able to see the new expansion plans Richardson has for their farming facility, which include a new man-made lake!

Golden Oaks Dairy, Wauconda – The participating teachers toured the last remaining dairy farm in Lake County. Teachers were given a first-hand look at the milking and maintenance techniques used by this first class facility. Along with learning about the dairy operation, the teachers gained insight on Golden Oak's composting operation: Midwest Organics.

Fields & Fences, Gurnee – Fields and Fences is a premier equestrian facility that offers an experience for all ages. Teachers learned about the equestrian operation along with the basic needs of caring for a horse. All the participants were given a tour of the barns and stables as well as the opportunity to interact with some of the friendly horses at the facility.

Seeger's Grain, Crystal Lake – Day two started off with a stop to Seeger's Grain in Crystal Lake. Teachers were enriched with information about the grain and field crop drying and transportation processes. Additionally teachers received statics about crop productions and sales stemming back to the early 2000's. Seeger's Grain provided the teachers with applicable information for use in lessons that incorporate agriculture for the upcoming school year.

Conserv FS, Marengo – New to the field trip line up, Conserv FS provided great insight on application practices. Teachers were able to see the equipment that blends fertilizers, pesticides and herbicides according to the need of the property. Using the most modern technology, Conserv FS provides farmers with the blends that are best for their fields. Additionally, teachers were able to see how and where seeds were treated right on site.

Heinz Orchard, Green Oaks – Heinz Orchard offered the teachers insight into a small apple orchard business. Heinz Orchard is a family run apple orchard that is strictly all about picking apples! The teachers enjoyed learning about the care of the trees and how a small orchard can continue to operate while being tucked away in a residential area.

Yarc Farms, Libertyville – Day two's final stop proved to be a crowd favorite. Upon arrival, the teachers were able to watch a combine in action while it was harvesting wheat. Once the pass was completed, teachers were able to ask questions about raising field crops and the distribution process. Teachers also had the opportunity to see the farm buildings and equipment, amongst many different types of farm animals.

Historic Wagner Farm, Glenview – Teachers were excited to milk a cow bright and early on day three of the field trip at Historic Wagner Farms. Before they were able to milk the cow, they learned the history of Wagner Farms and about the milking process. Besides



learning about milking, teachers toured the community gardens at Wagner Farms. This year's theme was salsa, so many of the gardens had crops that could be used as ingredients for making salsa. Many of the teachers plan on bringing their students to this location for a field trip in the coming school year.

Jewel Distribution Center, Melrose Park – Also new to this year's lineup was the Jewel Distribution Center, where a lot of the products from Jewel stores in the Chicagoland area are distributed. This stop gave teachers great insight how food is cared for in the transportation process. After having a discussion about transporting food, the teachers took a tour of the warehouse where it gets to as cold as -18 degrees! Thankfully we did not go to that part of the warehouse, and instead ended our tour in the steamy -8 degree portion. Seeing all the food that gets distributed across Chicago land to the Jewel stores was fascinating.

USDA @ O'Hare Airport, Chicago – Day three also included, a unique stop of the trip, a behind the scenes tour of the USDA @ O'Hare Airport. Agricultural Specialists gave the group an overview of the US customs operation and what goes on to ensure the safety of our country's agricultural industry.

Additionally, the airport's agricultural canine patrol "Beagle Brigade" also put on a demonstration for our teachers. The beagles are trained to sniff out fruits and meats that could potentially cause billions of dollars in damage to agriculture if they are infected and exposed to US soils.

Didier's Vegetable Farm, Lincolnshire – At the final stop of the trip, Dave Didier gave a presentation about his family's vegetable planting techniques. Teachers saw a hands-on demonstration of the farm's seeding and planting machines. The planting techniques were a highlight of the visit along with the opportunity to

shop at their gift store. Teachers also were able to eat apple cider doughnuts and brought home a parsley plant of their own. What a great way to conclude day three!

The Lake County Farm Bureau is proud to offer programs like the Educator Field Trip and would like to thank the Lake County Farm Bureau members who continue to make voluntary contributions to the Agriculture in the Classroom program. In addition, the Lake County Farm Bureau would like to thank all the participating area agricultural businesses who opened their doors for our SAI tours along with all the commodity group presenters who visited.

Next year's educator field trip is scheduled to take place July 10th – 13th. Applications can be found on our website at lcfb.com. Any interested teachers are encouraged to contact Information Director Andy Blaul for more details at 847-223-6506 or by email at ablaul@ameritech.net.



Tomorrow is that day of the week when anything could happen

No one knows what tomorrow holds. Call today to schedule an Insurance and Financial Review to get prepared for your future.

**Call 866-COUNTRY
or visit
countryfinancial.com**

